

2016 Donna Ross Memorial Regatta, Sept 10 and 11
SAILING INSTRUCTIONS
Rockwall, Texas 75032

RULES

- The races will be governed by “The Racing Rules of Sailing for 2013-2016”, and these Sailing Instructions.
- The class rules of applicable national authorities will apply

NOTICE TO COMPETITORS

- Notice of Race posted at, by Friday Aug 26th. <http://www.donnaross.org/>

CHANGES IN SAILING INSTRUCTIONS

- Changes to these instructions will be posted on the website (www.donnaross.org). All changes will be posted at least 30 minutes before the scheduled warning signal.

SCHEDULE OF RACES

- Two races are planned for Saturday, Sept 10 and one race is planned for Sunday, Sept 11. The warning signal (1st gun) on Sat. is 11:00am, with the second race being held as soon as practicable after the end race one. The 1st gun on Sun. is 10:00am.
- The class flags for each race shall be as follows:
1st fleet – code flag one, 2nd fleet – code flag two, 3rd fleet – code flag three, etc
- One race shall constitute a regatta

SIGNALS MADE ASHORE

- Signals made ashore will be displayed from the covered dock area on “I” dock.

RACING AREA

- The racing area will be all of Lake Ray Hubbard south of I 30 (see Figure 1- Sailing Area South of I30).

Competitors Meeting (Skippers Meeting)

- Competitors Meeting will be held at 10:00am at covered dock area on “I” dock at Chandlers Landing Marina.

FLEETS and CLASSES TO BE SAILED

- Fleet breakdown will be announced at the competitors meeting. Possible Fleets are: Asymmetric, “A,” “B”, IC24, and Main and Jib fleet and Individual Class fleets.

THE COURSE.

- The course will be as described in “Figure 2- Course”
- The course designation will be noted in Black Letters on a white board at the stern of the committee boat.
- The compass bearing to the windward mark will also be designated.

MARKS

- All marks of the course will be orange spheres
- The first change mark will be a white sphere. The second change mark will be and orange sphere (alternating)

THE START

- Races will be started by the race committee using the 5 minute sequence.
- The starting line will be between the race committee boat and adjacent orange sphere.
- Individual recalls will be signaled by displaying code flag "X" (White with a Blue Cross), one sound and hailing the sail numbers of the yacht(s) concerned .
- Channel 71 shall be used for the purposes of notifying competitors of individual recalls (see RADIO COMMUNICATION.).
- Failure of a yacht to see or hear her recall signal shall not relieve her of her obligation to start correctly.

THE FINISH

- The finish line shall be between a committee boat (on Starboard) and an adjacent sphere (on Port).
- A blue flag denotes the Committee is on station, taking finishes.
- All boats crossing the finish line will receive a sound signal indicating a finish. The responsibility of sailing the proper course as indicated at the beginning of each race is each competitor's responsibility.

TIME LIMIT

- Yachts not finishing within 2 hours of their start time will be marked DNF.

ALTERNATIVE PENALTIES

- The 720 Degree Turn penalty (rule 44) will be in effect.

PROTESTS AND APPEALS

- Protesting yachts shall notify the race committee immediately after the finish of (or withdrawal from) the race in which the incident occurred.
- All Written protests shall include Skipper Name, Cell Phone and Boatname, and shall be provided to the Principle Race officer Roy Kuipers not later than 1 hour after the committee boat docks. The committee boat will hail on channel 71 that the protest time has begun.
- All protests shall first be heard by an arbitrator. The arbitrators shall be Scott Self or Dan Malak.

SAFETY

- It shall be the sole responsibility of each yacht to decide whether or not to start or continue a race.
- A yacht that retires from a race is asked to notify the race committee before leaving the course area or, notifying the race committee by hailing on channel 71, or if that is impossible, immediately after arriving ashore.

SCORING

- Boats within each fleet will be scored by the order in which they cross the finish line.
- There will be no throw outs
- One race shall constitute a regatta

RADIO COMMUNICATION.

- A boat shall neither make radio transmissions while racing nor receive radio communications not available to all boats. This restriction also applies to mobile telephones.
- The race committee will attempt to hail premature starters via VHF.
- Radio communications will be on VHF Channel 71 for all fleets

DISCLAIMER OF LIABILITY.

- Competitors participate in the regatta entirely at their own risk. See rule 4, Decision to Race. The organizing authority will not accept any liability for material damage or personal injury or death sustained in conjunction with or prior to, during, or after the regatta.

INSURANCE.

- Each participating boat shall be insured with valid third-party liability insurance.

Misc.

- There are no haul out restrictions

Figure 1- Sailing Area South of I30

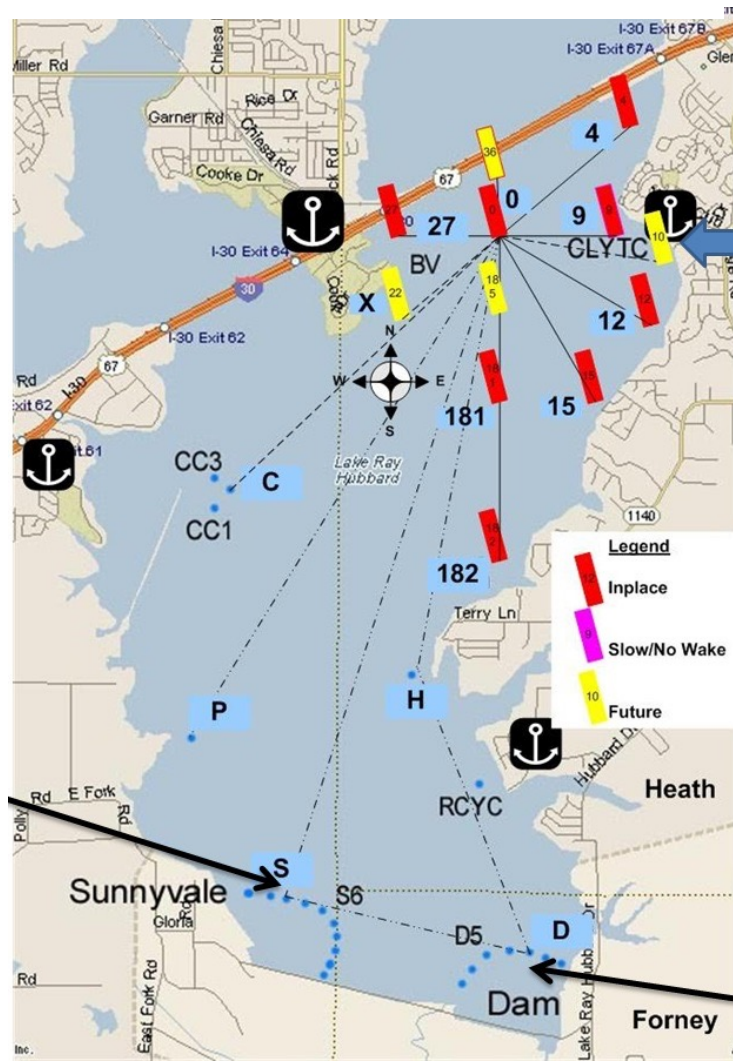
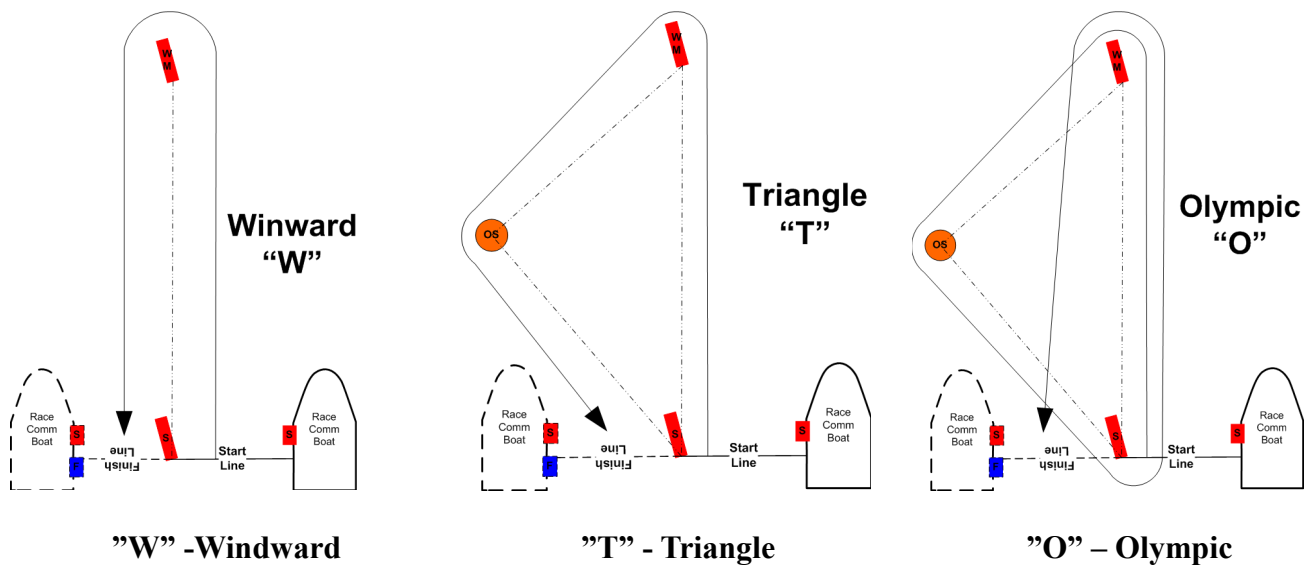


Figure 2- Courses



Modified Courses

